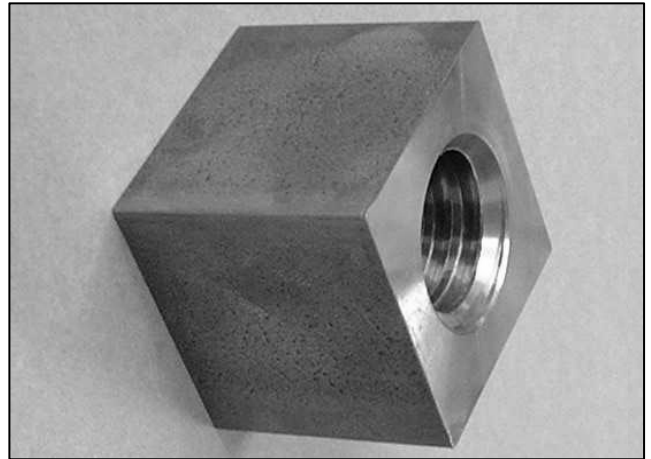
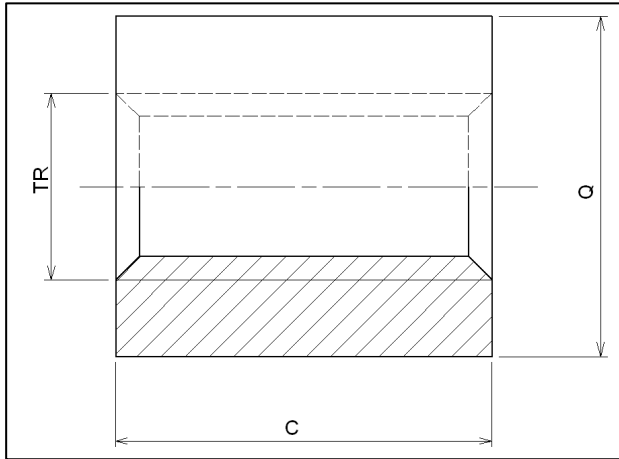


Trapezoidal square machined nuts VKM of steel 11SMnPb37 according to ISO 2901/2903 and DIN 103



Use :

- For manual control.
- For low rotation speeds.
- For clamping or locking functions.
- For receiving dead weights.

The use of steel/steel contact surface is not recommended for motorised motions.

SINGLE START

Reference	Q across flats mm	C mm	Contact surface mm ²	Weight Kg
EVKM10x2D/G	17	15	150	0.027
EVKM12x3D/G	25	18	210	0.076
EVKM14x3D/G	25	20	285	0.079
EVKM16x4D/G	28	24	365	0.119
EVKM18x4D/G	30	28	470	0.154
EVKM20x4D/G	35	30	590	0.259
EVKM22x5D/G	35	33	700	0.240
EVKM24x5D/G	40	36	845	0.354
EVKM26x5D/G	40	39	1005	0.363
EVKM28x5D/G	45	42	1175	0.506
EVKM30x6D/G	45	45	1335	0.513
EVKM32x6D/G	55	48	1430	0.891
EVKM36x6D/G	60	54	1950	1.163
EVKM40x7D/G	60	60	2400	1.216
EVKM44x7D/G	65	66	2940	1.538

TWO START

Reference	Q across flats mm	C mm	Contact surface mm ²	Weight Kg
EVKM10x4P2D*	17	15	150	0.027
EVKM12x6P3D	25	18	210	0.076
EVKM14x6P3D	25	20	285	0.079
EVKM16x8P4D	28	24	365	0.119
EVKM18x8P4D*	30	28	470	0.154
EVKM20x8P4D	35	30	590	0.259
EVKM22x10P5D*	35	33	700	0.240
EVKM24x10P5D	40	36	845	0.354
EVKM26x10P5D*	40	39	1005	0.363
EVKM28x10P5D*	45	42	1175	0.506
EVKM30x12P6D	45	45	1335	0.513
EVKM32x12P6D*	55	48	1430	0.891
EVKM36x12P6D	60	54	1950	1.163
EVKM40x14P7D	60	60	2400	1.216

D = right-hand thread

G = left-hand thread

* = available in 8 days