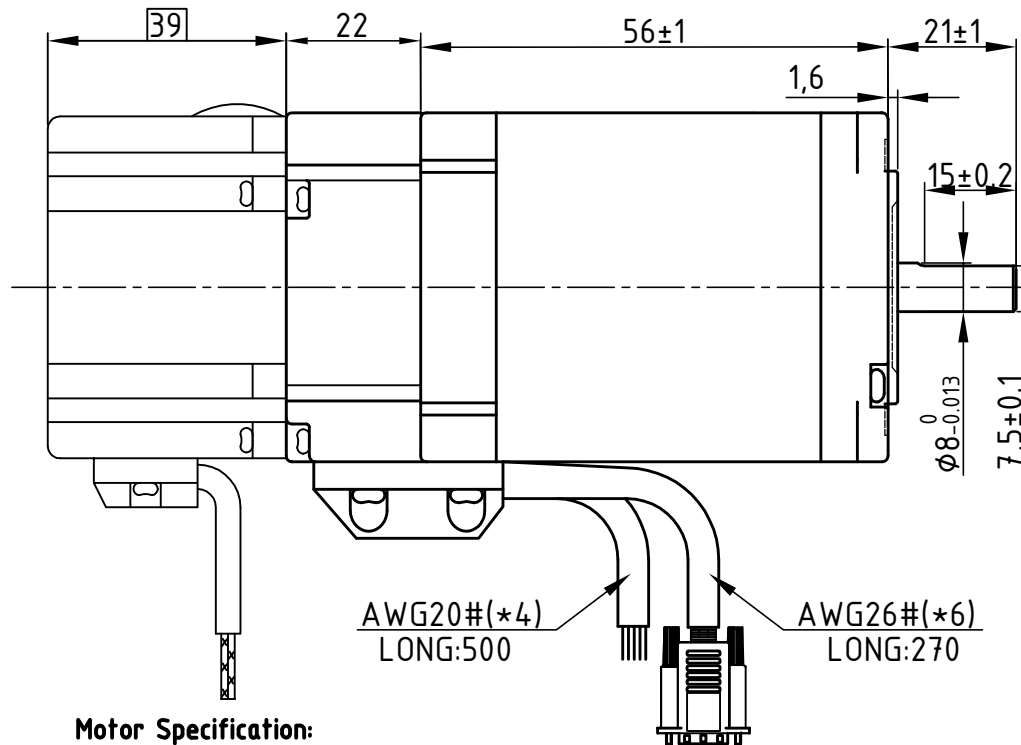
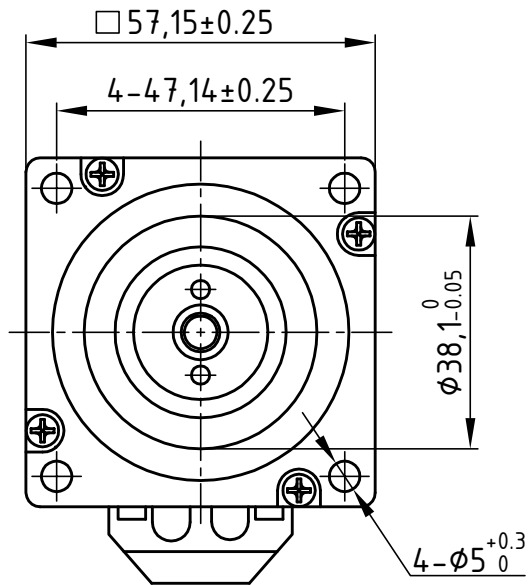
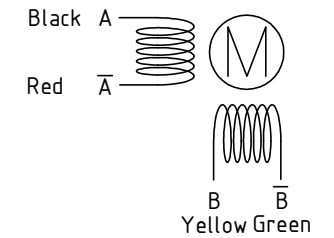


Dimension: (Unit: mm)

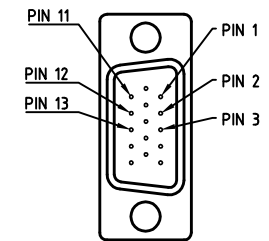


版本 Rev.	日期 Date	变更文件号 ECN NO.	变更内容 Revisions	设计 By
V1.0	18.10.19		带框图	王洪松

Motor Connctions:



Encoder Signals



PIN	1	2	3	11	12	13
Color	BLK	RED	WHT	YEL	GRN	BLU
Define	A+	VCC	GND	B+	B-	A-

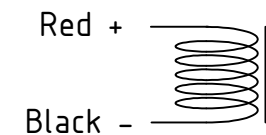
Common Rating

Step angle	1.8°
Position accuracy	1.8±0.09°
Dielectric strength	500VAC 1min
Insulation resistance	100MΩhm(500VDC)
Insulation class	B
Temp rise(Max)	80K
Radial play	Max.0.02mm(Load 450g)
Axial play	Max.0.08mm(Load 900g)

Motor Specification:

Current/phase	4 A
Voltage	2.4 V
DC Resistance/phase ±10%	0.45 Ω
Inductance/phase ±20%	1.4 mH
Holding torque	1.2 N·M
Inertia	0.28 kg·cm ²
Weight	1.5 kg
Encoder Resolution	1000 cpr

Brake Connections



Brake Specification:

Voltage	24Vdc
Friction torque	2N·M

设计 Designed	王洪松	日期 Date	2018.11.27	材料 Material		深圳市雷赛智能控制股份有限公司 SHENZHEN LEADSHINE TECHNOLOGY CO., LTD.		
审核 Checked	黄捷建	2018.11.27		第一角画法 First Angle projection			名称 Title	Closed-loop Stepper Motor with Brake
批准 Approved	黄捷建	2018.11.27		重量 Weight	比例 Scale	阶段标记 Stage Mark		CS-M22313B
料号 Part No.				共 1 页 第 1 页 Sheet 1 of 1			图号 DWG. NO.	LS-CME57-02-0111-08