

## Trapezoidal flanged machined nuts BFM of bronze CC493K (CuSn7ZnPb) according to ISO 2901/2903 and DIN 103 tolerance 7H.

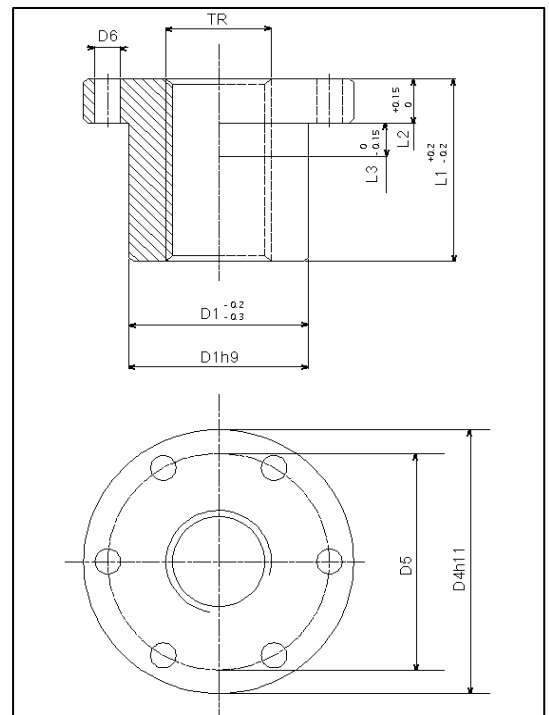
Use:

- For manual or powered control.
- For low and medium rotation speeds.
- For working under load.

The use with steel or stainless steel screws gives good results, especially if lubrication is correctly ensured.

### SINGLE START

| Reference    | D1  | D4  | D5  | D6*    | L1  | L2 | L3 | Contact surface | Weight |
|--------------|-----|-----|-----|--------|-----|----|----|-----------------|--------|
|              | mm  | mm  | mm  | mm     | mm  | mm | mm | mm <sup>2</sup> | Kg     |
| EBFM10x2D/G  | 25  | 42  | 34  | 5*M4   | 25  | 10 | 6  | 250             | 0.016  |
| EBFM12x3D/G  | 28  | 48  | 38  | 6*M5   | 35  | 12 | 8  | 400             | 0.266  |
| EBFM14x3D/G  | 28  | 48  | 38  | 6*M5   | 35  | 12 | 8  | 460             | 0.258  |
| EBFM16x4D/G  | 28  | 48  | 38  | 6*M5   | 35  | 12 | 8  | 530             | 0.244  |
| EBFM18x4D/G  | 28  | 48  | 38  | 6*M5   | 35  | 12 | 8  | 610             | 0.228  |
| EBFM20x4D/G  | 32  | 55  | 45  | 7*M6   | 44  | 12 | 8  | 870             | 0.346  |
| EBFM22x5D/G  | 32  | 55  | 45  | 7*M6   | 44  | 12 | 8  | 1030            | 0.322  |
| EBFM24x5D/G  | 32  | 55  | 45  | 7*M6   | 44  | 12 | 8  | 1040            | 0.304  |
| EBFM26x5D/G  | 38  | 62  | 50  | 7*M6   | 46  | 14 | 8  | 1280            | 0.474  |
| EBFM28x5D/G  | 38  | 62  | 50  | 7*M6   | 46  | 14 | 8  | 1200            | 0.442  |
| EBFM30x6D/G  | 38  | 62  | 50  | 7*M6   | 46  | 14 | 8  | 1370            | 0.408  |
| EBFM32x6D/G  | 45  | 70  | 58  | 7*M6   | 54  | 16 | 10 | 1710            | 0.706  |
| EBFM36x6D/G  | 45  | 70  | 58  | 7*M6   | 54  | 16 | 10 | 1950            | 0.606  |
| EBFM40x7D/G  | 63  | 95  | 78  | 9*M8   | 66  | 16 | 12 | 2650            | 1.700  |
| EBFM44x7D/G  | 63  | 95  | 78  | 9*M8   | 66  | 16 | 12 | 2940            | 1.524  |
| EBFM50x8D/G  | 72  | 110 | 90  | 11*M10 | 75  | 18 | 14 | 4540            | 2.324  |
| EBFM60x9D/G  | 88  | 130 | 110 | 11*M12 | 90  | 20 | 16 | 5490            | 3.942  |
| EBFM70x10D/G | 95  | 140 | 120 | 11*M12 | 105 | 22 | 18 | 7500            | 4.465  |
| EBFM80x10D/G | 105 | 150 | 130 | 11*M12 | 120 | 24 | 20 | 9710            | 6.150  |



### TWO START

| Reference     | D1 | D4 | D5 | D6*  | L1 | L2 | L3 | Contact surface | Weight |
|---------------|----|----|----|------|----|----|----|-----------------|--------|
|               | mm | mm | mm | mm   | mm | mm | mm | mm <sup>2</sup> | Kg     |
| EBFM10x4P2D*  | 25 | 42 | 34 | 5*M5 | 25 | 10 | 6  | 250             | 0.016  |
| EBFM12x6P3D   | 28 | 48 | 38 | 6*M5 | 35 | 12 | 8  | 400             | 0.266  |
| EBFM14x6P3D   | 28 | 48 | 38 | 6*M5 | 35 | 12 | 8  | 460             | 0.258  |
| EBFM16x8P4D   | 28 | 48 | 38 | 6*M5 | 35 | 12 | 8  | 530             | 0.244  |
| EBFM18x8P4D   | 28 | 48 | 38 | 6*M5 | 35 | 12 | 8  | 610             | 0.228  |
| EBFM20x8P4D   | 32 | 55 | 45 | 7*M6 | 44 | 12 | 8  | 870             | 0.346  |
| EBFM22x10P5D  | 32 | 55 | 45 | 7*M6 | 44 | 12 | 8  | 1030            | 0.322  |
| EBFM24x10P5D  | 32 | 55 | 45 | 7*M6 | 44 | 12 | 8  | 1040            | 0.304  |
| EBFM26x10P5D* | 32 | 62 | 50 | 7*M6 | 46 | 14 | 8  | 1280            | 0.474  |
| EBFM28x10P5D  | 38 | 62 | 50 | 7*M6 | 46 | 14 | 8  | 1200            | 0.442  |
| EBFM30x12P6D  | 38 | 62 | 50 | 7*M6 | 46 | 14 | 8  | 1370            | 0.408  |
| EBFM32x12P6D  | 45 | 70 | 58 | 7*M6 | 54 | 16 | 10 | 1710            | 0.706  |
| EBFM36x12P6D  | 45 | 70 | 58 | 7*M6 | 54 | 16 | 10 | 1950            | 0.606  |
| EBFM40x14P7D  | 63 | 95 | 78 | 9*M8 | 66 | 16 | 12 | 2650            | 1.700  |



D=right-hand thread

G=left-hand thread

\*=available in 8 days