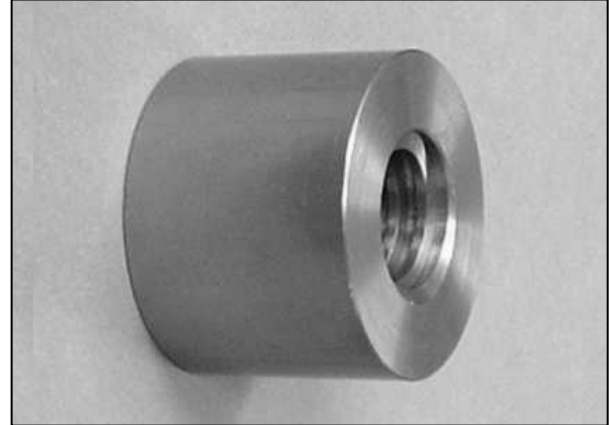
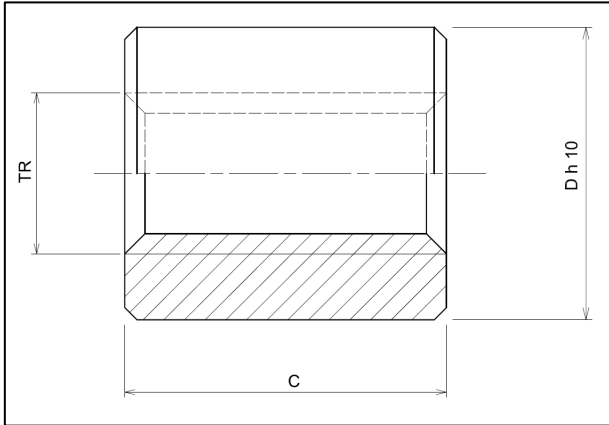


Trapezoidal cylindrical machined nuts KSM of steel 11SMnPb37 according to ISO 2901/2903 and DIN 103.



Use:

- For manual control.
- For low rotation speeds.
- For clamping or locking functions.
- For receiving dead weights.

The use of steel/steel contact surface is not recommended for motorised motions.

SINGLE START

Reference	D mm	C mm	Contact surface mm ²	Weight Kg
EKSM10x2D/G	22	15	150	0.035
EKSM12x3D/G	26	18	210	0.055
EKSM14x3D/G	30	21	285	0.090
EKSM16x4D/G	36	24	365	0.155
EKSM18x4D/G	40	27	470	0.215
EKSM20x4D/G	45	30	590	0.305
EKSM22x5D/G	45	33	700	0.322
EKSM24x5D/G	50	36	845	0.440
EKSM26x5D/G	50	39	1005	0.450
EKSM28x5D/G	60	42	1175	0.740
EKSM30x6D/G	60	45	1335	0.765
EKSM32x6D/G	60	48	1430	0.790
EKSM36x6D/G	75	54	1950	1.470
EKSM40x7D/G	80	60	2400	1.830
EKSM44x7D/G	80	66	2940	1.890
EKSM50x8D/G	90	75	3790	2.695
EKSM60x9D/G	100	90	5490	3.865
EKSM70x10D/G	110	100	7140	5.115
EKSM80x10D/G	120	110	8900	6.000

TWO START

Reference	D mm	C mm	Contact surface mm ²	Weight Kg
EKSM10x4P2D*	22	15	150	0.035
EKSM12x6P3D	26	18	210	0.055
EKSM14x6P3D	30	21	285	0.090
EKSM16x8P4D	36	24	365	0.155
EKSM18x8P4D	40	27	470	0.215
EKSM20x8P4D	45	30	590	0.305
EKSM22x10P5D*	45	33	700	0.322
EKSM24x10P5D	50	36	845	0.440
EKSM26x10P5D*	50	39	1005	0.450
EKSM28x10P5D	60	42	1175	0.740
EKSM30x12P6D	60	45	1335	0.765
EKSM32x12P6D	60	48	1430	0.790
EKSM36x12P6D	75	54	1950	1.470
EKSM40x14P7D	80	60	2400	1.830

D = right-hand thread

G = left-hand thread

* = available in 8 days