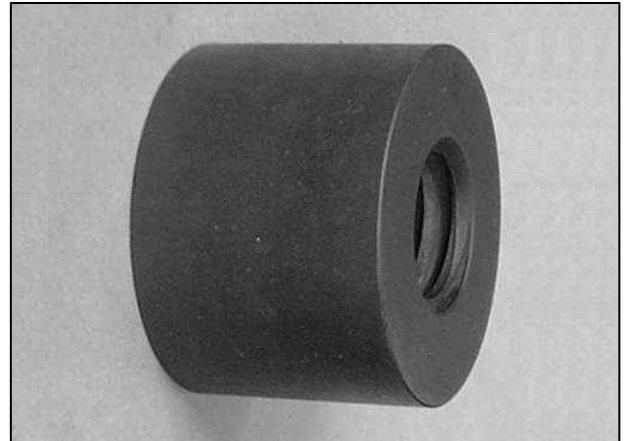
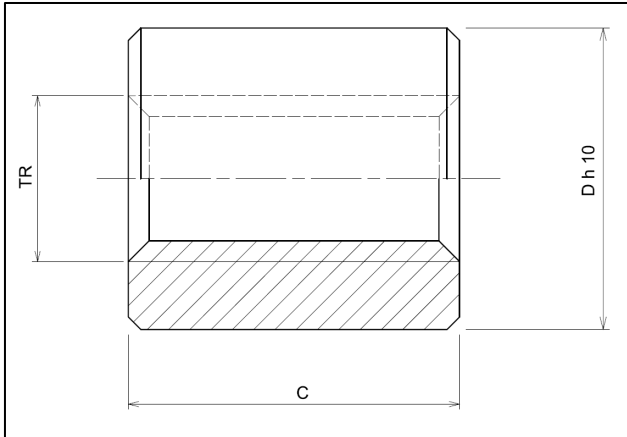


## Trapezoidal cylindrical machined nuts LKM of Nylon PA 6.6 according to ISO 2901/2903 and DIN 103 tolerance 7H.



### Use :

- For manual or powered control.
- For medium and high rotation speeds.
- For working under moderate load.
- Very low sound level.

The use with steel or stainless steel screws gives very good results.  
Can be used without lubrication, but the service life will be reduced.

### SINGLE START

Reference	D mm	C mm	Contact surface mm <sup>2</sup>	Weight Kg
ELKM10x2D/G	22	20	200	0.009
ELKM12x3D/G	26	24	280	0.012
ELKM16x4D/G	36	32	490	0.032
ELKM20x4D/G	45	40	790	0.060
ELKM24x5D/G	50	48	1130	0.088
ELKM30x6D/G	60	60	1780	0.150
ELKM36x6D/G	75	72	2610	0.300
ELKM40x7D/G	80	80	3210	0.370

### TWO START

Reference	D mm	C mm	Contact surface mm <sup>2</sup>	Weight Kg
ELKM10x4P2D*	22	20	200	0.009
ELKM12x6P3D	26	24	280	0.012
ELKM16x8P4D	36	32	490	0.032
ELKM20x8P4D	45	40	790	0.060
ELKM24x10P5D	50	48	1130	0.088
ELKM30x12P6D	60	60	1780	0.150
ELKM36x12P6D	75	72	2610	0.300
ELKM40x14P7D	80	80	3210	0.370

D = right-hand thread

G = left-hand thread

\* = available in 8 days